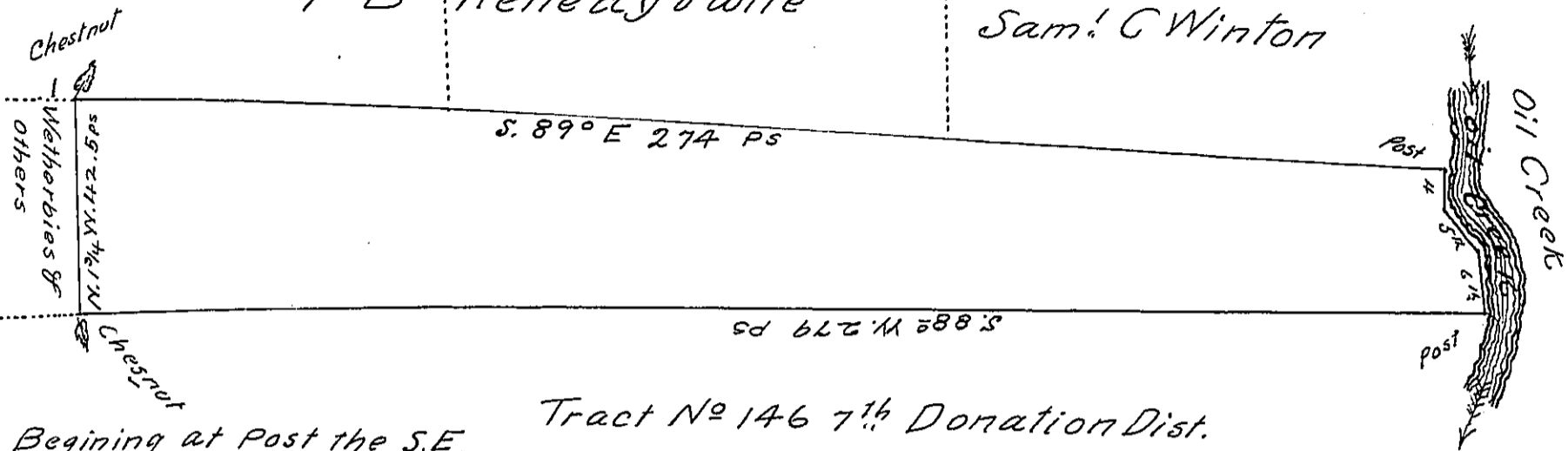


8th Donation Dist.
 Tract No 1733
 T B Kennedy & wife

No 1732
 Saml C Winton



Beginning at Post the S.E.
 Corner in West Bank of
 the Creek

Tract No 146 7th Donation Dist.
 Harrison Boyle and others

Station	Courses	Dist in Perches
1 st	S. 88° W	279
2 ^d	N 13/4 W	42 5/10
3 ^d	S. 89° E	274
4 th	S. 5° W	7 1/10
5 th	S. 36° E	11
6 th	S. 1° E	12

By Virtue of a Warrant dated the thirtieth day of May A.D. 1860
 surveyed the 21 day of May A.D. 1861 to T.B. Kennedy the above descri-
 bed Tract of Land, Situate in Athens Township County of Cra-
 wford Containing fifty seven acres, and eighty three per-
 ches and allowance of Six per cent for Roads &c.

James Tryon Co. Surveyor
 for Crawford Co.

To Hon. Wm H Heim
 Surveyor General.

IN TESTIMONY that the above is a copy of the original remaining on file in
 the Department of Internal Affairs of Pennsylvania, made
 conformably to an Act of Assembly approved the 16th day of
 February, 1833, I have hereunto set my Hand and caused
 the Seal of said Department to be affixed at Harrisburg,
 this fourteenth day of August 1905

Isaac S. Pearson
 Secretary of Internal Affairs.